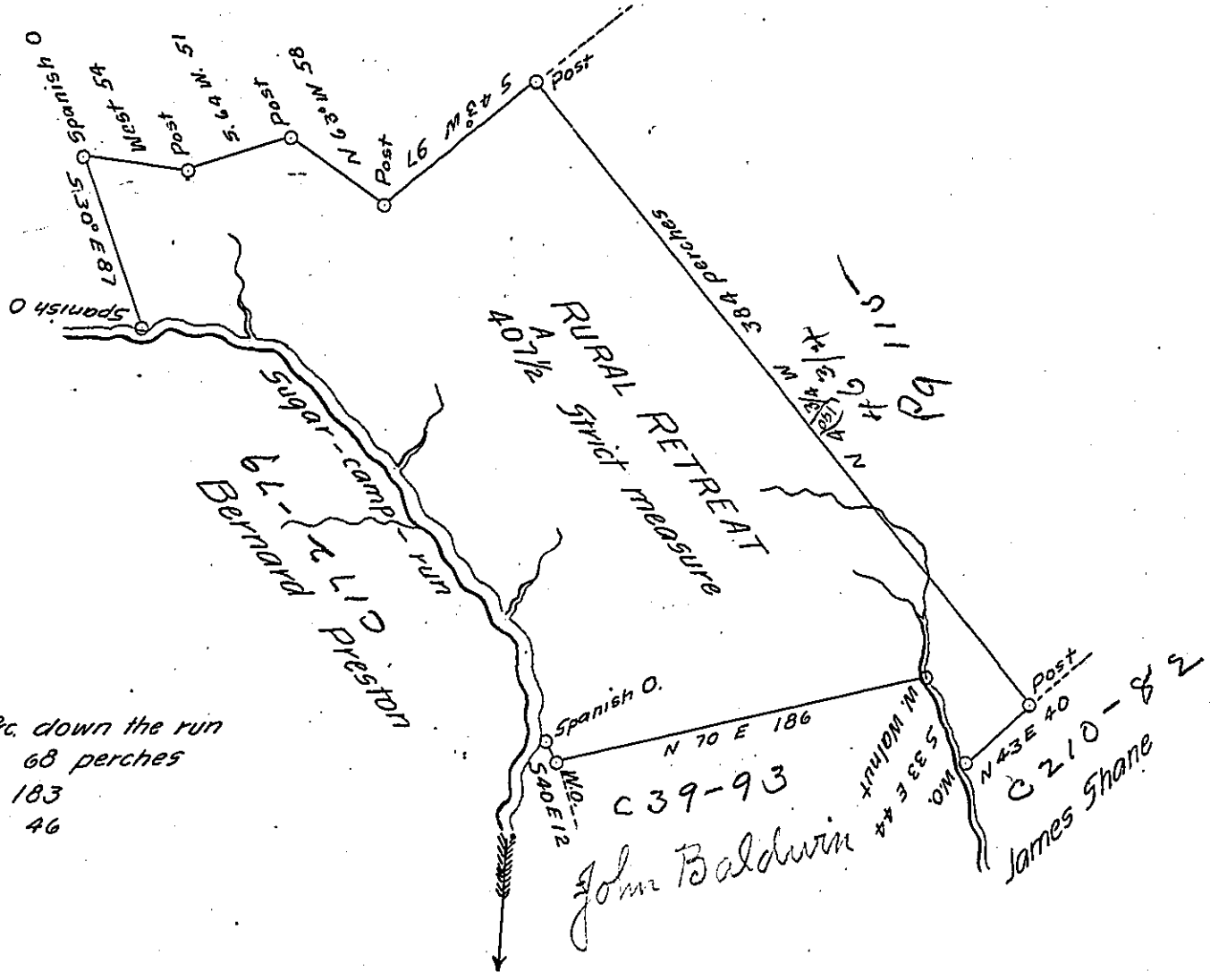


Saml. Hill



Courses &c down the run
 East 68 perches
 5 47° E 183
 5 23 E 46

" A Draught of a Survey called Rural Retreat situate on the waters of Pigeon creek in Nottingham township Washington county executed October the 27th 1786 in consequence of a virginia Certificate for 400 acres granted by the Commissioners to James Innis and duly entered with the County Surv^r as appears from the authenticated List — The above contains 40 1/2 acres strict measure.

Signed

Fresley Nevill
 Matt^w Ritchie } Dpsw

Dan^l Broadhead Esq^r S.G.

P. S. I examined the above survey in the month of May last, and found it correct. The land has been well improved for many years, and I know of no adverse claim whatever

Rich^d T. Leech Esq^r S.G.

James Reed D.S.

December 15th 1817

IN TESTIMONY that the above is a copy of the original remaining on file in the Department of Internal Affairs of Pennsylvania, made conformably to an Act of Assembly approved the 16th day of February, 1833, I have hereunto set my Hand and caused the Seal of said Department to be affixed at Harrisburg, this seventeenth day of August 1904

Isaac R. Brown
 Secretary of Internal Affairs.